

Powerton Timeline of Events

Late 1920s

Powerton Station begins operations with Units 1-4

1973

Unit 6 at Powerton brought on line

1971

Unit 5 at Powerton brought on line

Early 1970s

Powerton Units 1-4 are retired

1978

Powerton Ash Surge Basin and Metal Cleaning Basin constructed with Poz-O-Pac liner



1920s

1930s

1940s

1950s

1960s

1970s

1980s

1990s

Powerton

Midwest Generation

General

EXHIBIT

669

Burberg No. 5208

Powerton Timeline of Events

1999

MWG begins operating all Stations

2001

Maria Race begins work at MWG

2002 - 2005

MWG begins review of ash ponds at its Stations

- Locates historic drawings
- Conducts internal planning
- Retains consultants (NRT and KPRG)
- Site visits and reviews

May 2004

MWG samples coal ash from basin area and bottom ash from Powerton Station; Sample results show past historic materials and bottom ash qualifies as CCB

1998

1999

2000

2001

2002

2003

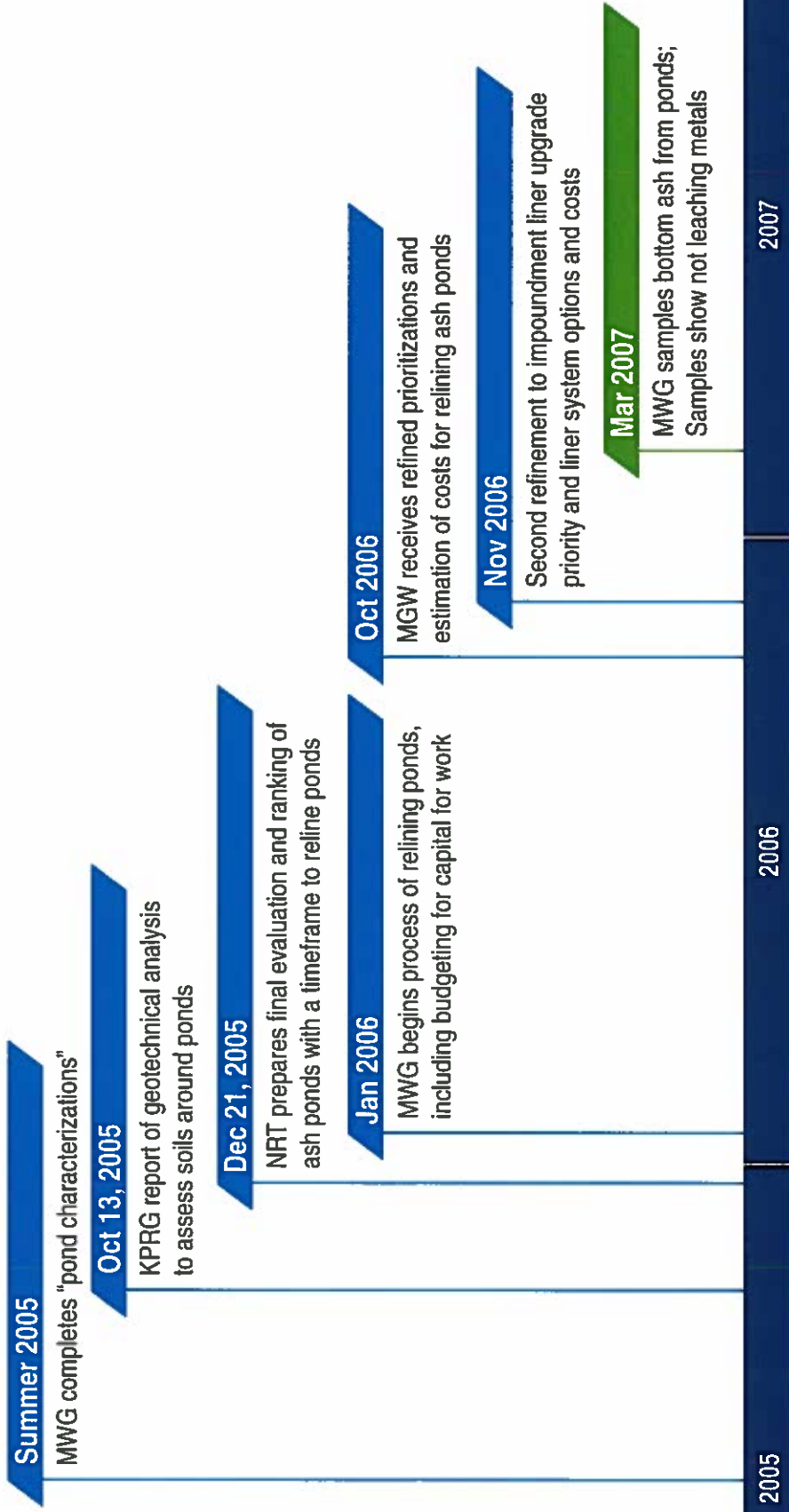
2004

Powerton

Midwest Generation

General

Powerton Timeline of Events

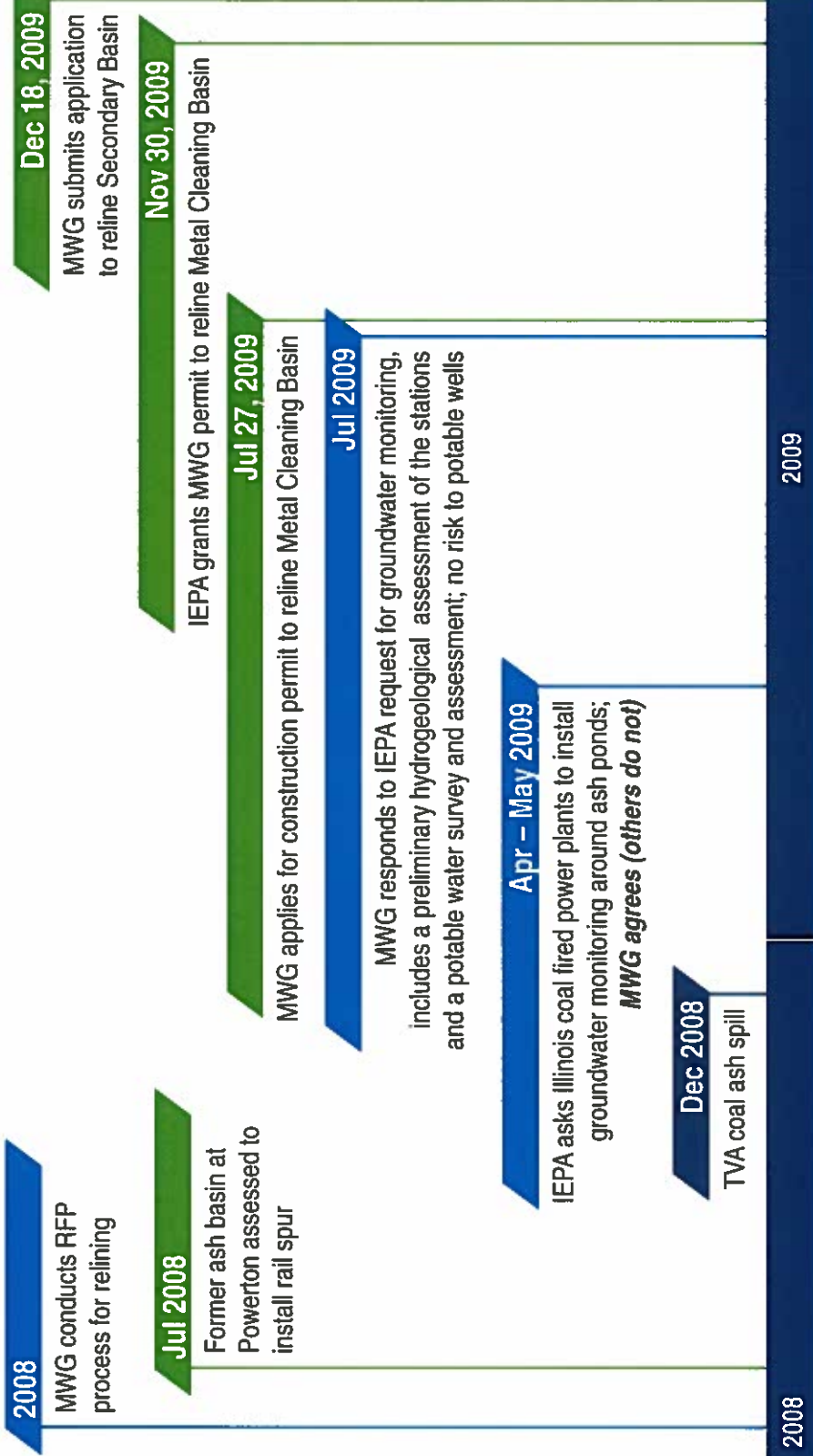


Powerton

Midwest Generation

General

Powerton Timeline of Events



Powerton Timeline of Events

Jan 2010

USEPA announces intent to propose regulation of CCR as a hazardous waste

Jan 27, 2010

MWG asks NRT to hold work on liner permit applications because of new USEPA regulations

Apr 2, 2010

IEPA grants construction permit to reline Secondary Basin

May 2010

USEPA issues Questionnaire for Steam Electric Power Generating Effluent ("ICR") to coal fired power plants in U.S.

Jun 21, 2010

USEPA formally proposes regulations under RCRA related to CCR management

Jun 30, 2010

MWG applies for construction permit to reline Bypass Basin

Aug 2010

MWG receives consultant proposals for hydrogeologic assessment

Sep 2010

MWG submits Hydrogeologic Assessment Plans to IEPA

Sep 15, 2010

IEPA grants MWG construction permit to reline Bypass Basin

Sep 24, 2010

IEPA approves MGW Hydrogeologic Assessment Plans

Oct 2010

MWG responds to USEPA ICR request

Dec 2010

MWG conducts first groundwater sampling at all stations

Dec 2010

MWG relines Bypass Basin at Powerton with HDPE

2010

Powerton

Midwest Generation

General

Powerton Timeline of Events

Feb 2011

MGW submits Hydrogeologic Assessment Reports to IEPA

Mar 2011

MGW relines Metal Cleaning Basin at Powerton with HDPE

MGW conducts quarterly groundwater sampling of all Stations

2011

Dec 7, 2012

MGW files for bankruptcy

Nov 2012

MGW begins process of completing all tasks in the four CCAs

Oct 24, 2012

IEPA accepts all four Compliance Commitment Agreements to resolve VNs

Oct 3, 2012

Sierra Club files this lawsuit

Jul 27, 2012 – Aug 2012

MGW submits VN responses to IEPA

Jun 2012

IEPA issues violation notices (VN) to MGW

2012

Powerton

Midwest Generation

General

Powerton Timeline of Events

Jan 7, 2013

MWG applies for construction permit to reline Ash Surge Basin

Feb 25, 2013

IEPA grants MWG permit to reline Ash Surge Basin

Jun 15, 2013

Powerton Secondary Basin relined with HDPE

Aug 26, 2013

IEPA approves Powerton ELUC

Oct 3, 2013

IEPA approves Powerton GMZ

Oct 10, 2013

Powerton Ash Surge Basin relined with HDPE

Oct 2013

Maria Race certifies CCAs completed

Mar 2014

NRG purchases MWG out of bankruptcy

Apr 17, 2015

Coal Combustion Residual Rule published in Federal Register

Dec 19, 2014

USEPA issues final Coal Combustion Residual Rule

Dec 2015

MWG posts, pursuant to Federal CCR rules, notification of closure of Former Ash Basin at Powerton

2013

2014

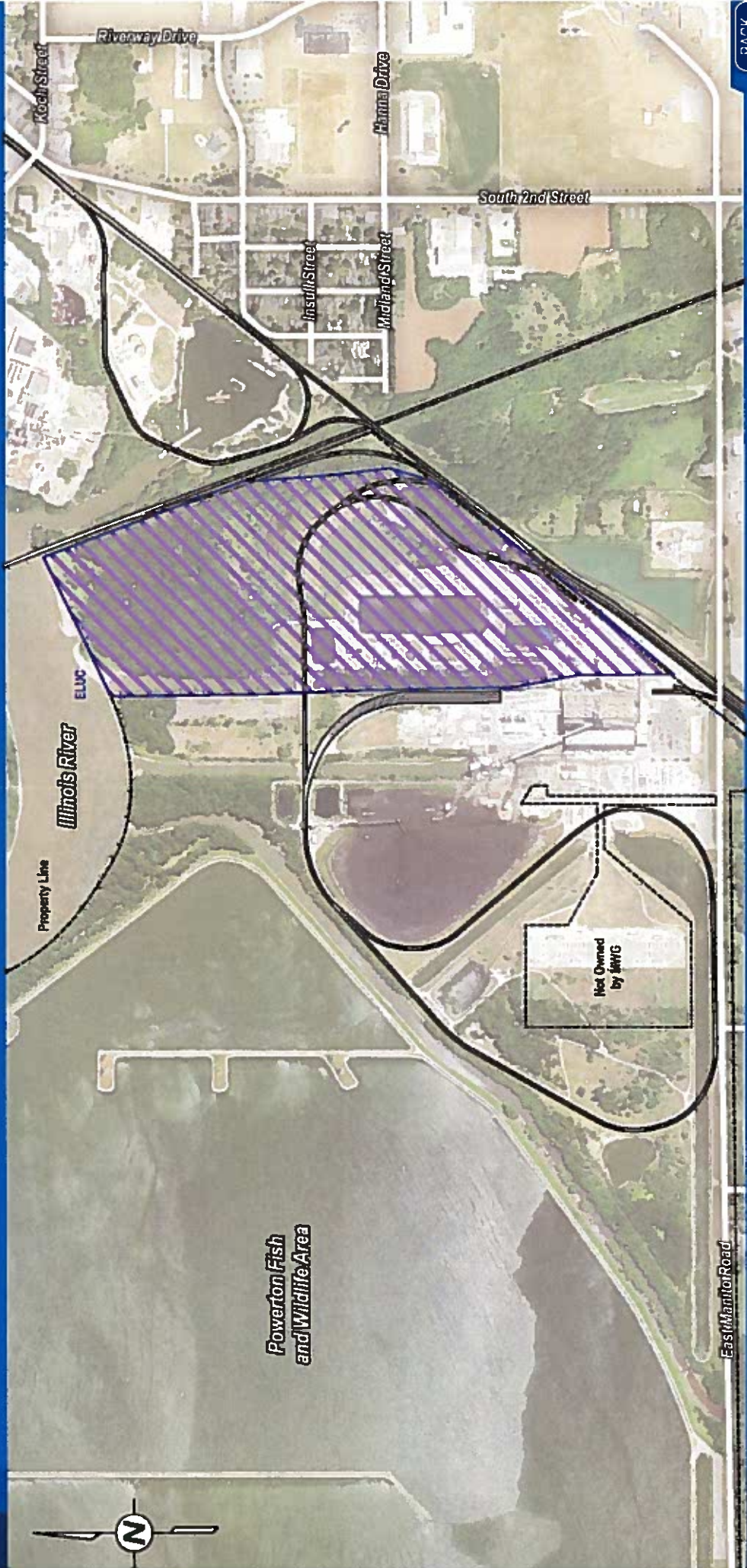
2015

Powerton

Midwest Generation

General

Powerton Station - ELUC



BACK

Powerton Station - GMZ



BACK

Powerton Timeline of Events

Jan 2016

MWG conducts first Annual Inspection of ash ponds at stations pursuant to Federal CCR rules

Oct 2016

MWG completes various reports pursuant to Federal CCR rules

Apr 2017

MWG completes Emergency Action Plans for the stations pursuant to Federal CCR rules

2016

2017

Powerton

Midwest Generation

General

Panoramic View of Entire Basin From
Northeast Corner, Facing Southwest



EX 649a